



How to Fax with Zoiper Communicator

This guide shows how a fax could be sent or received with Zoiper Communicator.

Index

<u>SENDING FAXES WITH ZOIPER COMMUNICATOR</u>	<u>2</u>
How to send a fax with the Zoiper Communicator Biz Printer driver?	2
How to send a fax by converting the document to a TIFF file?	4
How to send a fax with Zoiper Biz for Linux/Mac OS X?	4
<u>HOW TO RECEIVE A FAX WITH ZOIPER COMMUNICATOR?</u>	<u>7</u>
Where is my newly received fax?	7
How to set a default directory for storing incoming faxes?	8
<u>EXAMPLES</u>	<u>9</u>
Sip accounts	9
Extensions	9

Sending faxes with Zoiper Communicator

Zoiper Communicator's T.38 faxing capability is available only for SIP and Zoiper Service.

To use Zoiper Communicator's faxing feature you need a T.38 capable VoIP provider.

If the device on the other side does not support T.38, you will need a T.38 Gateway.

The way you can send faxes depends on your operating system.

When using Zoiper Communicator Biz for *Windows*, you can fax almost any document by using the Zoiper Print to Fax driver.

Zoiper Print to Fax driver works on Windows 2000, XP, Vista and 7.

When using *Linux* or *Mac OS X* you need to convert the file to a *TIFF* image, then you will be able to send it as a fax message.

There are two ways to send a fax using Zoiper Communicator for Windows:

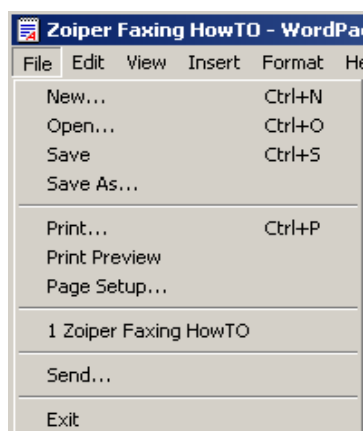
By using the *Zoiper Printer Driver* and by converting it to a *TIFF* file

1. How to send a fax with the Zoiper Communicator Biz Printer driver?

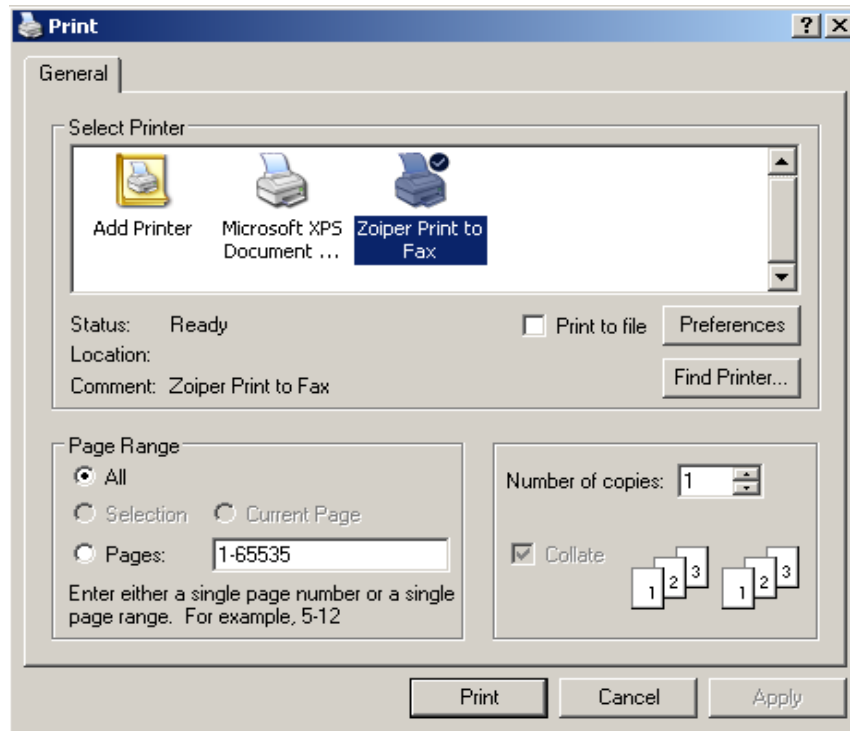
The Zoiper Printer Driver is only available in the Biz version.

You just need to open the document, then the printing dialogue.

"File" → "Print"



Select the "**Zoiper Print to Fax**" virtual device and press "**Print**".



Zoiper will be invoked even if it was not started.

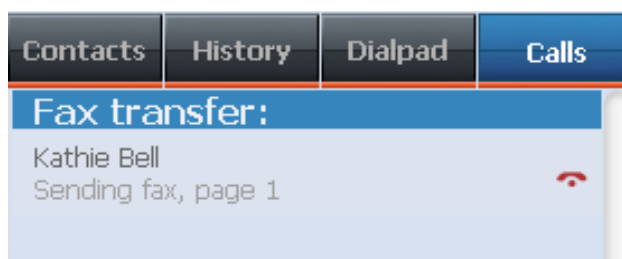
A new window will appear.

If you intend to send the document to a person that is already in your *contact list*, use the **drop-down** menu to select the recipient.

If the recipient is not in your contact list, just type the number in the "**Recipient**" field.



After the recipient answers the call, Zoiper Communicator Biz will start sending the fax.



The T.38 fax feature of Zoiper Communicator is available only for SIP and Zoiper Service.

2. How to send a fax by converting the document to a TIFF file?

This feature is available on:

- *Zoiper Communicator Biz for Windows*
- *Zoiper Communicator Free for Windows*
- *Zoiper Communicator Biz for Mac OS X*
- *Zoiper Communicator Free for Linux*

Convert your document to a TIFF file according to the following guidelines:

200 dpi R6 portrait orientation, 1 bit per pixel.

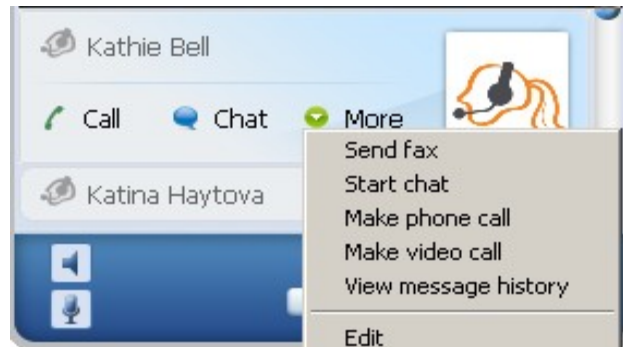
200 dpi R6 is A4 and Letter combined, so use either A4 or Letter.

- *Multi-page TIFF files, arbitrary resolutions and pixel depths are supported.*
- *Colour pages are automatically desaturated by luminance, then dithered using Floyd-Steinberg to 1 bit per pixel.*
- *This has good effect and detail retaining for photos and pictures.*
- *If a page is not in the 195-205 dpi resolution range it will be scaled automatically using Lanczos Sinc resampling to 200 dpi while retaining aspect.*
- *If the page size does not match R6, it will be cut where it is longer and white will be added where it is shorter.*
- *No scaling is used.*
- *Most of the TIFF image compressions are supported including JPEG-in-TIFF.*

Standalone JPEG files are not supported.

After your *TIFF* image is ready, start your Zoiper Communicator. Select the recipient from the contact list and press "**More**". A menu will appear.

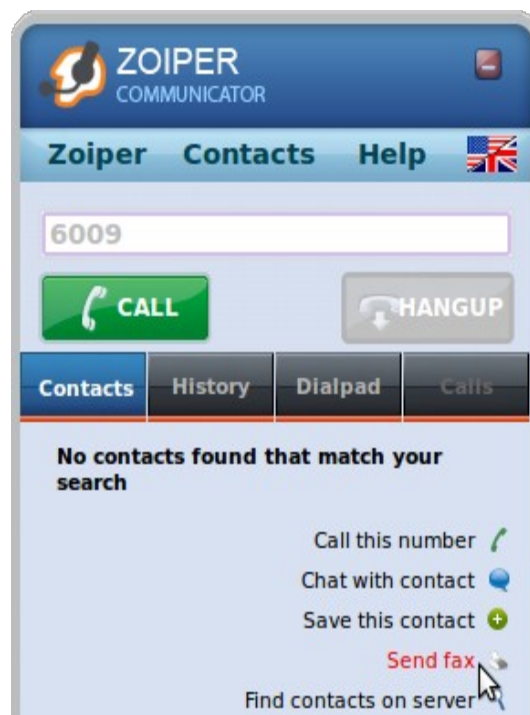
Select the "**Send fax**" option.



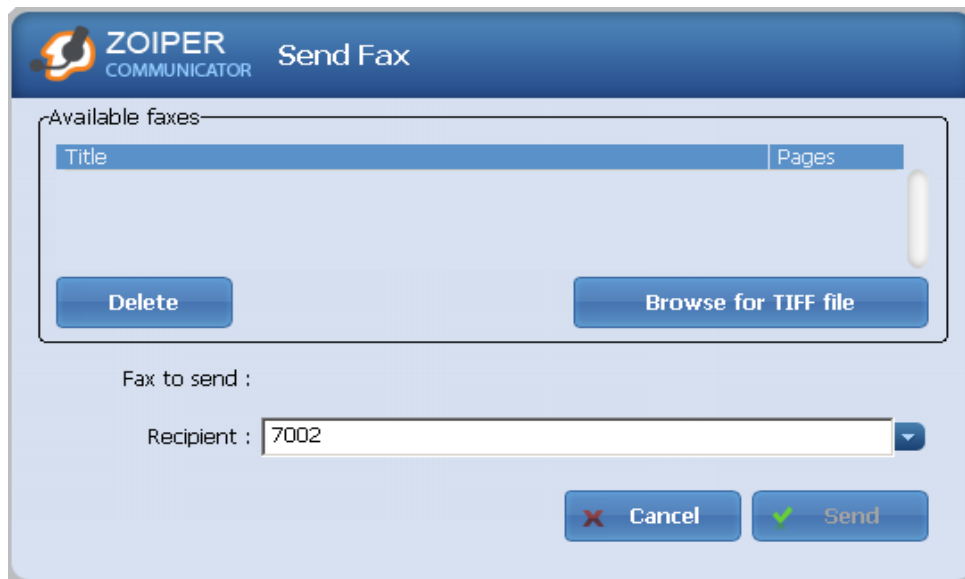
You can also send faxes to contacts that are not in your contact list.

You just need to type the number in the dialling field.

A list of options will appear. Select the "**Send fax**" option.



The **"Send Fax"** window will appear.

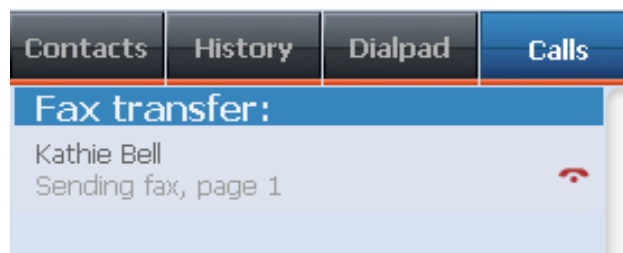


Use the **"Browse for TIFF file"** button to locate your *TIFF* file.
After you confirm your choice, it will appear in the list.



Press the **"Send"** button.

After the call is answered by the recipient, Zoiper will start sending the fax.



How to receive a fax with Zoiper Communicator?

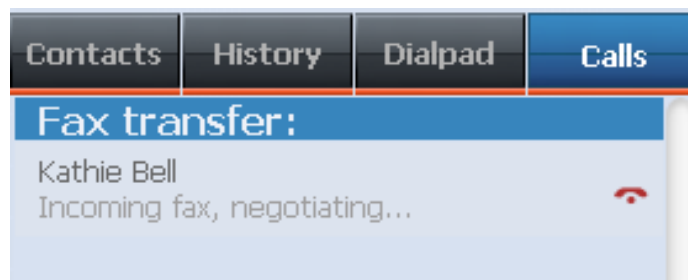
Receiving faxes with Zoiper Communicator is the same for all supported operating systems.

To receive a fax you only need to answer the incoming call.

Zoiper can not determine if a call is a voice call or an incoming fax until it is answered.



The status of an incoming fax call can be monitored in the "**Calls**" tab.



All faxes are stored as TIFF files.

Where is my newly received fax?

Zoiper Communicator for Windows stores the fax in: **My documents\My Zoiper Communicator faxes** for the currently logged user.

On Mac OS X the fax is saved in: **~/Documents/My Zoiper Communicator faxes**

On Linux the fax is saved in the home folder **~/**

Set a default directory for storing incoming faxes

This feature is useful if you receive lots of faxes and need fast access to the directory they are saved in.

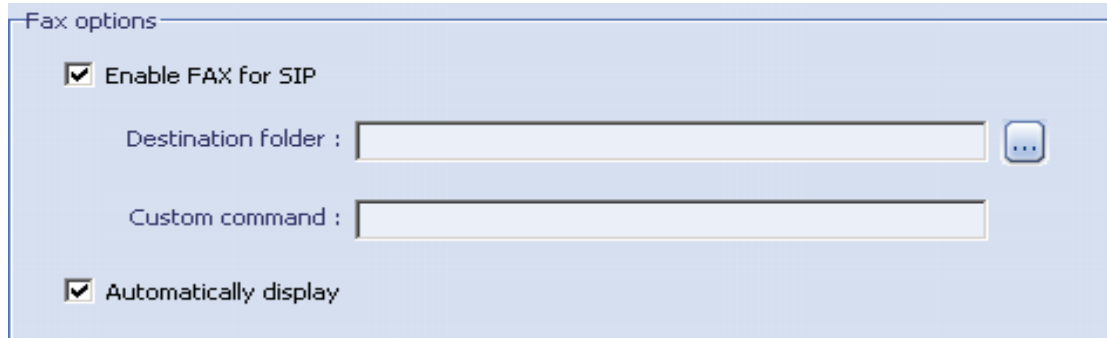
Open the "**Zoiper**" menu and select "**Preferences**"



This opens the **Options** window.


See the "**FAX Options**" in the **Options** tree on the left 

Here are the options that enable and control receiving faxes with Zoiper Communicator:



"Destination folder" - a directory where the incoming faxes will be stored.

"Automatically Display" - when marked, each incoming fax will be opened automatically.

Use the browse button  to select the folder where the incoming faxes have to be stored.

Zoiper Communicator Free puts a watermark on the TIFF image.

To remove this watermark please upgrade to the Biz version.

Example configuration for Asterisk

The examples below are showing two SIP accounts and their extensions.

Sip accounts

```
[general]
context=default
allowoverlap=no
bindaddr=0.0.0.0
srvlookup=yes
t38pt_udptl = yes
```

```
[jsmith]
t38pt_udptl = yes
type=friend
username=jsmith
callerid="Jane Smith"<7001>
secret=k1tk@
host=dynamic
context=t38test
disallow=all
allow=ulaw
allow=alaw
canreinvite=no
qualify=yes
dtmfmode=auto
```

```
[kbell]
t38pt_udptl = yes
type=friend
username=kbell
callerid="Kathie Bell"<7002>
secret=k1tk@
host=dynamic
context=t38test
disallow=all
allow=ulaw
allow=alaw
canreinvite=no
qualify=yes
dtmfmode=auto
```

Extensions

```
[general]
static=yes
writeprotect=no
clearglobalvars=no
```

```
[t38test]
exten => 7001,1,Dial(SIP/jsmith)
exten => 7002,1,Dial(SIP/kbell)
```