



How to fax with Zoiper Classic

This guide shows you how to send and receive faxes with Zoiper Classic.

Index

<u>SENDING FAXES WITH ZOIPER CLASSIC</u>	<u>2</u>
How to send a fax by using the Zoiper Classic Biz Printer Driver?	3
How to send a fax by converting your document to a TIFF file?	4
How to send a fax when using Linux or Mac OS X?	4
<u>HOW TO RECEIVE A FAX WITH ZOIPER CLASSIC?</u>	<u>6</u>
Where is my newly received fax?	6
How to set a default directory for storing incoming faxes?	6
<u>EXAMPLES</u>	<u>8</u>
Sip accounts	8
Extensions	8

Sending faxes with Zoiper Classic

Zoiper Classic's T.38 faxing capability is available only for SIP and Zoiper Service.

To use Zoiper Classic's faxing feature you need a T.38 capable VoIP provider.

If the device on the other side does not support T.38, you will need a T.38 Gateway.

The way you can send faxes depends on your operating system.

When using Zoiper Classic Biz for *Windows*, you can fax almost any document by using the *Zoiper Print to Fax driver*.

Zoiper Print to fax driver works on Windows 2000, XP, Vista and 7.

The Zoiper Printer driver is only available for Zoiper Biz.

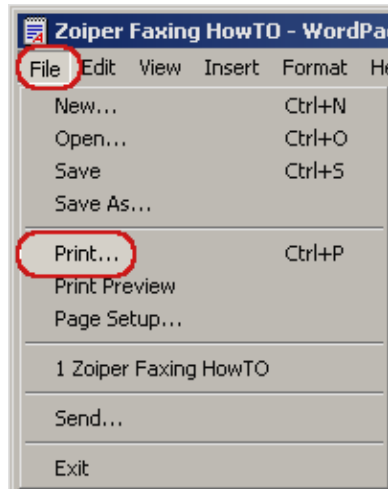
***There are two ways to send a fax using Zoiper Classic Biz for Windows:
By using the Zoiper Printer Driver and by converting it to a TIFF file.***

[When using Linux or Mac OS X you will first need to convert your file to a TIFF image.](#)

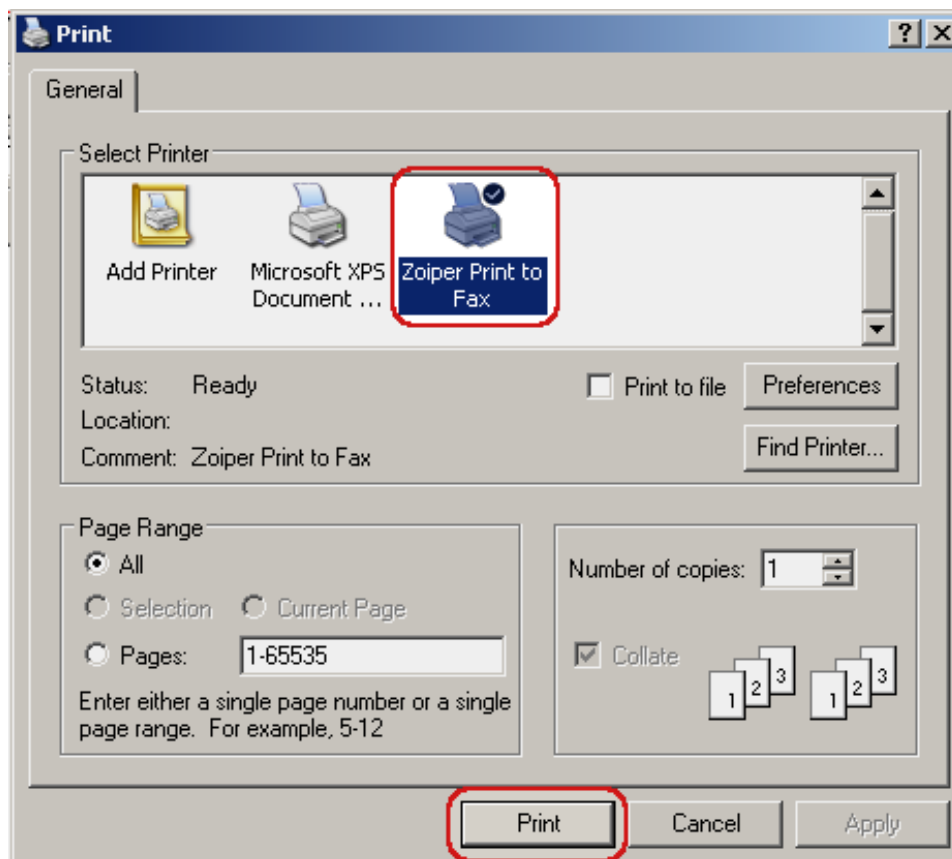
How to send a fax by using the Zoiper Classic Biz Printer Driver ?

You just need to open the document, then the printing dialogue.

"File" → "Print"



Select the **"Zoiper Print to Fax"** virtual device and press **"Print"**.



Zoiper will be invoked even if it was not started.

How to send a fax by converting your document to a TIFF file?

This feature is available on:

- Zoiper Classic Biz for Windows
- Zoiper Classic Free for Windows
- Zoiper Classic Biz for Mac OS X
- Zoiper Classic Free for Mac OS X
- Zoiper Classic Biz for Linux
- Zoiper Classic Free for Linux

Convert your document to a TIFF file according to the following guidelines:

200 dpi R6 portrait orientation, 1 bit per pixel.

200 dpi R6 is A4 and Letter combined, so use either A4 or Letter.

- Multi-page TIFF files, arbitrary resolutions and pixel depths are supported.
- Colour pages are automatically desaturated by luminance, then dithered using Floyd-Steinberg to 1 bit per pixel.
 - This has good effect and detail retaining for photos and pictures.
 - If a page is not in the 195-205 dpi resolution range it will be scaled automatically using Lanczos Sinc resampling to 200 dpi while retaining aspect.
 - If the page size does not match R6, it will be cut where it is longer and white will be added where it is shorter.
- No scaling is used.
- Most of the TIFF image compressions are supported including JPEG-in-TIFF.

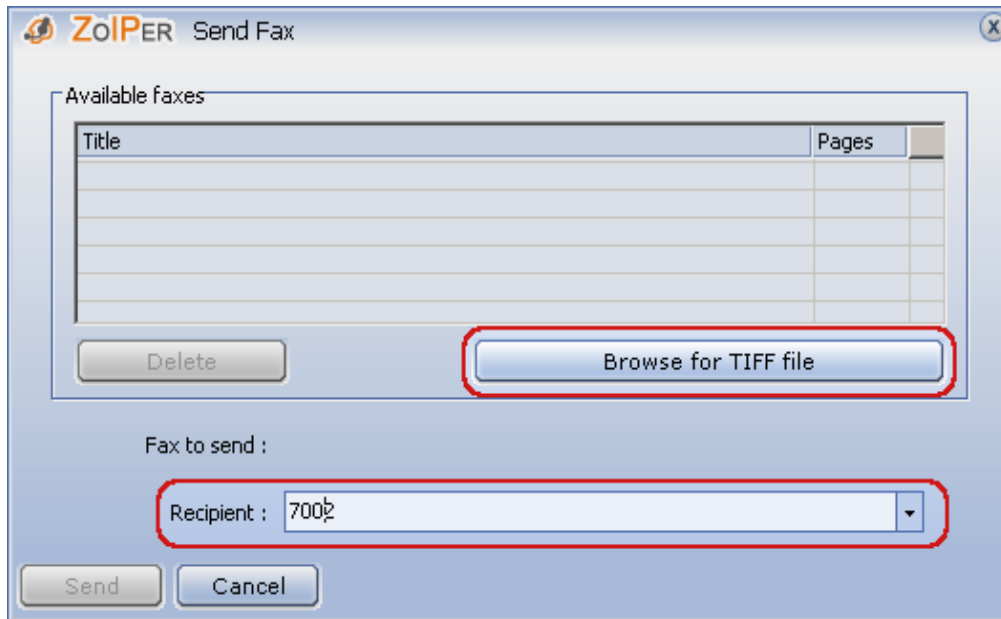
Standalone JPEG files are not supported.

After your TIFF image is ready, start your Zoiper Classic.

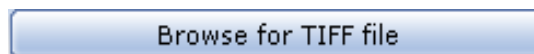
Press the **Fax** button 

To enable The Fax button while using Zoiper Free for Windows you will need to enter the recipient's number in the dialling field.

A new window will open.



Now use the button to locate your **TIFF** file.



Press "**Send**"

After the recipient answers the call you will see your Zoiper sending the fax message.



How to receive a fax with Zoiper Classic?

Receiving faxes with Zoiper Classic is the same for all supported operating systems.

To receive a fax you only need to answer the incoming call.

Zoiper can not determine if a call is a voice or an incoming fax until it is answered.



Where is my newly received fax?

Zoiper Classic Biz stores the fax in the user's Application Data/ZoiperBiz folder.

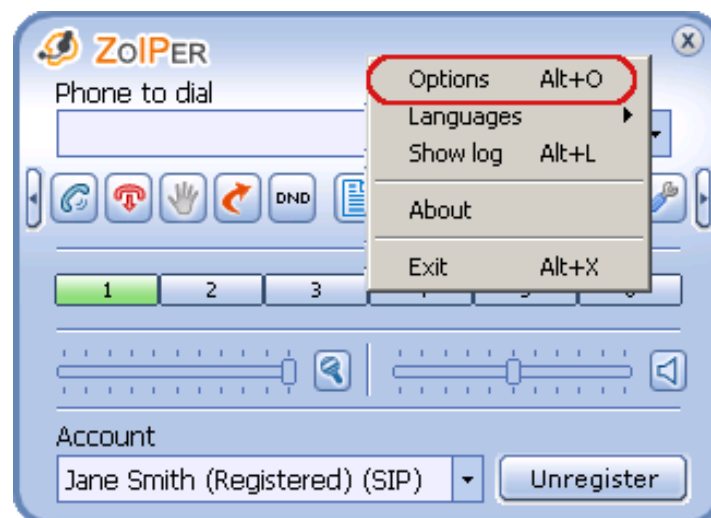
Zoiper Classic Free for Windows stores the fax in its installation directory.

On Linux/Mac OS X the fax is saved in the user's home directory

How to set a default directory for storing incoming faxes?

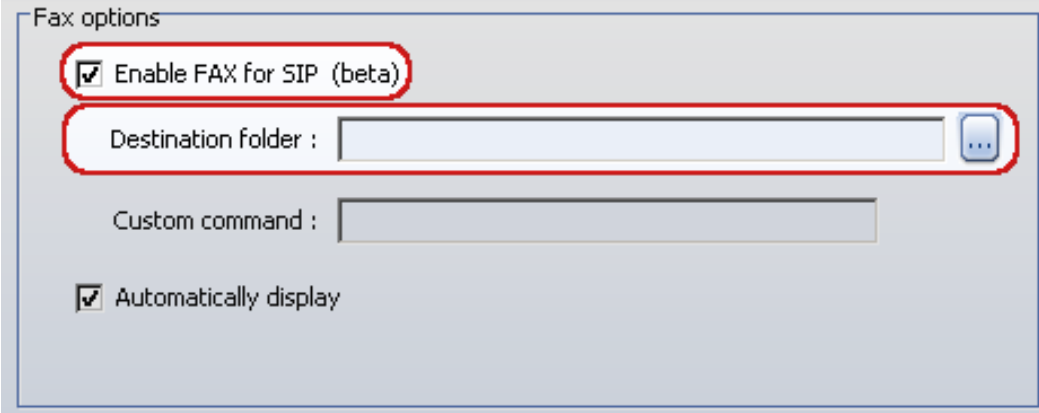
This feature is useful if you receive lots of faxes and need fast access to the directory they are saved in.

Open the **"Options"** screen by **using the right mouse button** on the softphone, or using the keyboard combination – **Alt+O**.



See the **"FAX Options"** in the **Options tree** on the left - 

Here are the options to enable and control receiving faxes with Zoiper Classic:



- **"Destination folder"** - a directory where the incoming faxes to be stored.
- **"Automatically Display"** - when marked, every incoming fax will be opened automatically.

Use the **browse** button  to select the folder where the incoming faxes to be stored.

Zoiper Classic Free puts a watermark on the TIFF image.

To remove this watermark please upgrade your Zoiper to Zoiper Biz.

Example configuration for Asterisk

The examples below are showing two SIP accounts and their extensions.

Sip accounts

```
[general]
context=default
allowoverlap=no
bindaddr=0.0.0.0
srvlookup=yes
t38pt_udptl = yes
```

```
[jsmith]
t38pt_udptl = yes
type=friend
username=jsmith
callerid="Jane Smith"<7001>
secret=k1tk@
host=dynamic
context=t38test
disallow=all
allow=ulaw
allow=alaw
canreinvite=no
qualify=yes
dtmfmode=auto
```

```
[kbell]
t38pt_udptl = yes
type=friend
username=kbell
callerid="Kathie Bell"<7002>
secret=k1tk@
host=dynamic
context=t38test
disallow=all
allow=ulaw
allow=alaw
canreinvite=no
qualify=yes
dtmfmode=auto
```

Extensions

```
[general]
static=yes
writeprotect=no
clearglobalvars=no
```

```
[t38test]
exten => 7001,1,Dial(SIP/jsmith)
exten => 7002,1,Dial(SIP/kbell)
```